



2021 DUBAI INTERNATIONAL BAJA FEBRUARY 18th – 20th, 2021

First Round of the 2021 FIM BAJAS WORLD CUP

SUPPLEMENTARY REGULATIONS FOR MOTORCYCLES, QUADS, FIM SSV & ASSISTANCE VEHICLES



منظمة الإمارات للسيارات والدراجات النارية
EMIRATES MOTORSPORTS ORGANIZATION

IMPORTANT

Please note that only the specifics of the 2021 Dubai International Baja are listed in these regulations.

If an article is not mentioned in this regulation it is because the 2021 FIM BAJAS WORLD CUP REGULATIONS is systematically applied.

The 2021 DIB INTERNATIONAL BAJA SUPPLEMENTARY REGULATIONS consist of all the following documents:

- The **2021 SUPPLEMENTARY REGULATIONS**.
- The **TECHNICAL REGULATIONS**
- The **APPENDICES** attached to these regulations
- The **ASSISTANCE REGULATIONS**, articles include in these regulations
- The **BULLETIN (S)** published during the Rally.

The event will be held in accordance with the relevant legal and administrative provisions of the host country, the FIM Sporting Code, the applicable FIM Technical Regulations, the FIM Medical, Anti-Doping and Environment Codes, the FIM Disciplinary and Arbitration Codes and the Regulations. **The FIM Bajas World Cup Regulations and its Appendices**, these Supplementary Regulations and any other regulations adopted by the FIM International Jury.

Documents you can find on the FIM website: www.fim-live.com & www.fim-moto.com

- **FIM SPORTING CODE**
- **FIM BAJAS WORLD CUP APPENDICES**
- **FIM BAJAS TECHNICAL REGULATIONS**
- **FIM DISCIPLINARY AND ARBITRATION CODE**
- **FIM ENVIRONMENT CODE**
- **FIM MEDICAL CODE**
- **FIM ANTI-DOPING CODE**
- **FIM CODE OF ETHICS**
- **FIM YEAR BOOK.**

2021 DIB SUPPLEMENTARY REGULATIONS

Article FIM	Article 2021 SR	
082.1	GENERAL	P 6
082.1.4.	1. Support Races	
082.2	OFFICIALS AND PROCEDURES	P 6
082.2.1.	1. FIM International Jury & Senior Officials	
	2. Identification of Officials of the Organization	
082.3	SUPPLEMENTARY REGULATIONS AND INSURANCE	P 7
	1. Publication	
	2. Organization Committee	
	3. Organizer's name, address and contact details	
	4. Programme of the Rally	
	5. Access to Innovation Centre – Dubai	
082.4	ENTRIES	P 11
	1. DIB Entry procedure	
	2. Customs obligation – ATA Carnet	
	3. Team entries	
	4. Team entries name	
	5. Service vehicles / Service Crews entries conditions	
	6. Entry fees for Riders, for Bike or Quad & for FIM SSV	
	7. Entry fees for FIM SSV	
	8. Entry fees for Service vehicles & Service Crews	
	9. Payment details	
	10. Refunds	
	11. Entry refusal - Withdrawal – No show	
	12. Cancellation or rescheduling of the Event	
082.5	INSURANCE	P 15
	1. Public liability cover	
	2. Overseas & GCC entries Cover	
	3. Declaration in case of accident	
	4. Individual accident insurance	
	5. FIM insurance include in your FIM licence	
	6. Medical insurance rules in UAE	
	7. Road insurance for Overseas Service Vehicles	
082.6	ENTERED COMPETITORS	P 17
	1. Entry conditions for the Rider	
	2. Coverage images – Image Rights	
	3. Particular conditions of visited countries	
082.6.1.	1. Starting numbers	
082.7	MOTORCYCLES / SSV, CATEGORIES & OTHER SPECIFICATIONS	P 18
	1. UAE and GCC laws and rules for vehicles in the desert	
082.7.1.	1. Categories & Classes	
	2. Organizer category	
082.7.4.	1. Identification	
082.7.5	1. Advertising	

082.8		TECHNICAL INSPECTION & ADMIN. CONTROL	P 19
082.8.1.	1.	Administrative obligations	
082.8.2.	1.	Preliminary Technical Inspection	
082.8.4.	1.	Technical Inspection at the end of the event	
082.9		FUEL	P 21
	1.	Fuel facility & procedure	
	2.	Fuel on road sections	
082.10		BAJA HEADQUARTERS	P 21
	1.	Rally Control EMERGENCY NUMBER	
082.11		ROUTE	P 22
082.11.1	1.	Forbidden Reconnaissance	
	2.	Road Book	
	3.	Official Itinerary	
	4.	Waypoints	
	5.	Navigation Rules	
	6.	Penalties	
	7.	Traffic regulations	
	8.	Crossing of inhabited area	
082.12		STAGES	P 24
	1.	Private tests	
	2.	Test Stage / Shakedown	
	3.	Distance of the Stages	
	4.	Schedules of stages	
082.13		SUPER SPECIAL STAGE (SSS)	P 25
082.14		SELECTIVE SECTIONS (SS)	P 25
082.14.1	1.	Distance of the Selective Sections	
	2.	No start or abandon in a Selective Section / Stage	
082.15		STARTING ORDER	P 25
082.15.1.	1.	Minimum interval between the last Bike/Quad & 1 st FIA car	
	2.	Minimum interval between the last FIA car & 1 st FIM SSV	
082.15.3.	1.	First and Second Stages	
082.15.6	3.	Change in the start order – Repositioning	
082.15.7	1.	Collective Start (Mass Start)	
082.16		SERVICING AND REFUELLING	P 26
082.16.1.	1.	Assistance at the Refuelling	
	2.	Tyres	
	3.	Team personnel / Service Crews	
082.16.2	1.	Service Park	
082.16.4.	1.	Refuelling by Organizer with tanker	
	2.	Fuel / Autonomy	
	3.	Refuelling during a Selective Sections	
	4.	Automatic Control for refueling and neutralizations	
082.18.		CONTROL ZONES	P 28
	1.	Technical Time Control (CHT)	

082.19		SPEED CONTROL ZONE	P 28
	1.	Speed control zone diagrams	
082.21		PASSAGE CONTROL	P 28
082.21.2.	1.	Passage Control Penalties	
082.24		FIXED PENALTIES (FP) / SPORTING PENALTIES (SP)	P 28
	1.	FP and SP value	
082.25		PARC FERME (CLOSED PARK)	P 29
	1.	Parc Ferme location during the Event	
082.27		SAFETY EQUIPMENT	P 29
082.27.1	1.	GPS UNIK II with integrated Sentinel	
	2.	Tracking System	
	3.	Helping at an accident	
082.28		ENVIRONMENT	P 30
	1.	Protecting the Environment	
082.30		RETIREMENT – DISQUALIFICATION	P 30
	1.	Number plate cross out in black	
082.31		CLOSURE OF TRACK	P 30
	1.	Mechanical problem	
082.32		CLASSIFICATION	P 30
	1.	General	
082.33		PROTESTS – APPEALS	P 31
	1.	Amount of the protest	
082.34		FINISH OF THE BAJA & PRIZE-GIVING CEREMONY	P 31
	1.	Procedure	
	2.	Ceremonial Podium Finish / Prize-Giving	
	3.	List of prizes – Cups	

SUMMARY OF THE PENALTIES (See 2021 FIM Bajas WC Regulations P62)

<i>Appendix 1 – 2021 Dubai International Baja COVID-19 PROTOCOL</i>	<i>P 31</i>
<i>Appendix 2 – Itinerary Moto – Quad – SSV</i>	<i>P 32</i>
<i>Appendix 3 – FIA Road Book Lexicon</i>	<i>P 33</i>
<i>Appendix 4 – Sportity Apps</i>	<i>P 34</i>

FIM 082.1 GENERAL

2021 SR 082.1.4. 1. Support races

There are not support races.

FIM 082.2 OFFICIALS AND PROCEDURES

2021 SR 082.2.1. 1. FIM International Jury & Senior Officials

FUNCTION	LAST NAME, NAME, NAT.	NAT. FED / FIM
FIM Jury President	RIDA-SBAI Larbi (MAR)	FRMM / FIM 14708
1 st Jury Member, FIM	POULSEN Juvana (CHL)	FMC / FIM 11237
2 nd Jury Member, FMNR	ZAROOUR Omar (JOR)	RMCI / FIM 14206
Clerk of the Course	DUCROCQ Marc (FRA)	FFM / FIM 12544
	Super Licence	FFM / FIM 3524
FIM Technical Director	SANTEJ Izak (SVN)	AMZS / FIM 12579
FMNR Chief Technical Steward	BOYTER Alan (GBR)	EMSO / FIM 14176
FMNR Environmental Steward	ABOU CHACRA Cesar (LBN)	UAEMC / FIM 11524
Chief Medical Officer	Dr. PETHERBRIDGE Sean (GBR)	EMSO / FIM 11919
Competitor relations Officer (CRO)	HERVAGAUULT Marie (FRA) Mobile: +971 50 718 4591	FFM / FIM 12545 
Route Director	SPILLER John (GBR)	-
Route Opening	DESSURNE Stephen (GBR) BOYTER Alan (GBR)	-
Route Closing	ROSS John Mitchell (GBR)	-
Chief Marshal	SARWAR Muhammad (IND)	-
Chief of Communications Ass. Chief Communications	WHITAKER Robert (GBR) HUTTON Sheila (GBR)	-
International Press Officer / Head of Media	LEWIS Tony (GBR)	-
Bivouac Manager	SKAYEM Jacques (LBN)	-
Service Park Manager	GRAHAM Clare (GBR)	-
Event Secretary & Secretary of the Jury	PREL Andreja (SVN)	-
Assistant Secretary	SHEHHI Violeta (SVN)	-
Chief Timekeeper & Tracking Officer	SCHINDELE Wolfgang (DEU)	FMI / FIM 13297
Responsible ERTF	BERNARD Alex (FRA)	-

Judges of fact: Names, FMN & licence numbers will be posted on the official notice board and communicated to all participants and to the FIM International Jury.

2021 SR 082.2.1. 2. Identification of Officials of the Organization

The officials will be identified by the following colored tabard:

Safety Marshals	Yellow
Post Chiefs	Blue with white stripe and text "Post Chief"
SS Commander	Red with white stripe and text "Stage Commander"
Competitor Relations Officer	Red with text "CRO"
Medical Personal	White with text "Medical"
Timekeeper	Orange with white stripe and text "Timekeeping"
Scrutineer	Black with white stripe and text "Scrutineer"
Media	Green with white stripe and text "Media"

FIM 082.3 SUPPLEMENTARY REGULATIONS AND INSURANCE

2021 SR 082.3. 1. Publication

Emirates Motorsports Organization is organizing the 1st round of the 2021 FIM Bajas World Cup. The event will take place in accordance with the relevant legal and administrative requirements of the host country/ies and the relevant FIM documents, including but not limited to the FIM Sporting Code, the applicable FIM Technical Regulations, the FIM Medical, Anti-Doping and Environmental Codes, the FIM Disciplinary and Arbitration Code, the FIM Code of Ethics and the Sporting and Technical Regulations of the FIM Bajas World Cup and the Appendices thereto, as well as the present Supplementary Regulations and any rules and regulations adopted by the FIM International Jury. The present Supplementary Regulations may not be in contradiction with the FIM Rules and Codes, including but not limited to the Sporting and Technical Rules applicable to the discipline. In the case of a divergence or conflict between these Regulations and any of the applicable FIM Rules and Codes, the latter shall prevail.

FIM Approval: **IMN 814/01 Motorbike, 815/01 Women, 816/01 Quad, 817/01 Junior, 818/01 SSV and 819/01 Veterans.**

FMN Approval: **EMSO / UAE-2021-015.**

In case of divergence or conflict of interpretation between the English and French versions, the English text shall prevail. The approved Supplementary Regulations must be published, at least in English, on the FIM website and on the site of the Organizer. In any matter not covered by the FIM Bajas World Cup Regulations or by these Supplementary Regulations, the FIM International Jury shall decide ex aequo et bono.

All additional provisions of a technical or organizational nature not contained in these Supplementary Regulations will be announced by means of a numbered, dated and signed addendum. Such addenda will form an integral part of the Supplementary Regulations and shall be posted on the official notice board of the Rally. They will also be communicated during the riders' briefing and the riders will be notified in the shortest time practicable.

2021 SR 082.3. 2. Organization Committee

Chairman: Mohammed Ben Sulayem
 Members: Mahir Badri
 Atiq Hassan Mubarak
 Ronan Morgan
 John Spiller
 Adel Kassim Sarris
 Bryan John Gener.

20201 SR 082.3. 3. Organizer's name, address and contact details

Dubai International Baja - Emirates Motorsports Organization

P.O. Box 5078

Tel: +971 4 296 1122

Dubai, United Arab Emirates

Fax: +971 4 296 1133

E-mail: entry@emso.ae

www.dubaiinternationalbaja.com

2021 SR 082.3. 4. Programme of the Rally

PROGRAM BEFORE THE EVENT WEEK

Tuesday, 19 January 2021		
09h00	Opening date for entries	Website

Tuesday, 26 January 2021		
09h00	Issuing of the Rally Guide	Website

Thursday, 28 January 2021		
Issuing of the MOTO Supplementary Regulations (DRAFT) Issuing of the AUTO Supplementary Regulations (DRAFT)		Website

Monday, 8 February 2021		
17h00	Closing date for entries	Supplementary Regulations

Thursday, 11 February 2021		
17h00	Publication of the provisional entry list	Website & Sportity
17h00	Publication of the Documentation & Scrutineering Timetable	Website & Sportity

PROGRAM DURING THE EVENT WEEK

Tuesday, 16th February 2021		
09h00 – 18h00	OPENING of the Bivouac / Service Park for <u>logistic off loading ONLY</u>	Dubai Innovation Centre

Tuesday, 16th February 2021

09h00 – 18h00	OPENING of the Bivouac / Service Park for Logistic off loading <u>ONLY</u>	Dubai Innovation Centre
---------------	--	-------------------------

Wednesday, 17th February 2021

09h00 – 18h00	COVID-19 PROTOCOL Activated; NO ACCESS without NEGATIVE TEST RESULTS (validity 48h) in the Bivouac / Service Park	COVID-19 Tent located in front of the entrance
---------------	--	--

Thursday, 18th February 2021

06h30 – 21h00	COVID-19 PROTOCOL Activated; NO ACCESS without NEGATIVE TEST RESULTS (validity 48h) in the Biouvac / Service Park	COVID-19 Tent located in front of the entrance
07h30 - 20h00	Rally Office opening hours	Rally HQ Innovation Centre
07h00 - 13h00	Administrative checks & collection of documents	Dubai, Innovation Centre
09h00	General Briefing Notes	Sportity
09h00 - 19h00	Media Centre opening hours	Dubai, Innovation Centre
09h00 - 16h00	Media Accreditation	Dubai, Innovation Centre
11h30	Virtual Pre-Rally Press Conference	TBC
08h00 - 14h00	Scrutineering of the vehicles, marking and sealing	Dubai, Innovation Centre
15h30	1st FIM Jury Meeting	Rally HQ - FIM Room Innovation Centre
16h30	Publication of the provisional Starting List (FIM)	Rally HQ Notice Board & Sportity
17h00	Clerk of the Course (Auto + Moto) – Available to address any questions that competitors may have.	Service Park / Start Ramp
18h00 18h00-18h20	All vehicles to enter PARC FERME according Moto – Quad - SSV	Innovation Centre
18h05	Publication of the start lists for Leg 1 (FIM)	Rally HQ Notice Board & Sportity

Friday, 19th February 2021		
06h00 - 19h00	Rally Office opening hours	Rally HQ Innovation Centre
07h30 - 19h00	Media Centre opening hours	Dubai Innovation Centre
07h01	Official Start First Competitor: Leg 1 – FIM - 212,13 Km	Exit of Service Park Innovation Centre
07h41	Issuing of the road book First Competitor (Leg 1) - Length 192,23 Km	Start of SS1
	According to SR's for each Category, All vehicles report to Parc Ferme after Leg 1.	Parc Ferme
18h00	2nd FIM Jury Meeting	Rally HQ - FIM Room Innovation Centre
19h00	Publication Results of Leg 1 and starting order Leg 2 – FIM	Rally HQ & Sportity

Saturday, 20th February 2021		
07h00 - 19h00	Rally Office opening hours	Rally HQ Innovation Centre
07h00 - 19h00	Media Centre opening hours	Innovation Centre
08h01	Official Start first Competitor: Leg 2 – FIM - 214,55 Km	Exit of Service Park Innovation Centre
08h41	Issuing of the road book first Competitor (Leg 2) - Length 194,75 Km	Start of SS2
12h34	Expected First Competitor at the finish and PARC FERME	Dubai Innovation Centre
13h00	Final Scrutineering - FIM	Innovation Centre Parking
14h00	Final FIM Jury meeting	Rally HQ – FIM Room Innovation Centre
16h00	Publication of provisional final classification	Rally HQ, Website & Sportity

16h30	Publication of final classification	Rally HQ, Website & Sportity
17h15	Podium Ceremony and Prize Giving	Dubai Innovation Centre

** Bikes, Quads and SSV will be in PARC FERME after Scrutineering (See Article 12.7)

2021 SR 082.3 5. General Briefing

This year due to Covid-19 restrictions, the General Briefing notes will be hosted electronically on the Sportity App (See Appendix A) @09h00 on Thursday, February 18th.

2021 SR 082.4 6. Safety Systems Briefing

This year due to Covid-19 restrictions, the Safety briefing notes will be hosted on the Sportity App (See Appendix A) @09h00 on Thursday, February 18th.

2021 SR 082.3. 7. Access to Innovation Centre

Nearest airport: Dubai International Airport (**71 km** from Innovation Centre – Rally HQ)
Nearest town: Dubai.

FIM 082.4 ENTRIES

2021 SR 082.4. 1. DIB Entry procedure

Entries should be made using the official forms available on the website www.dubaiinternationalbaja.com

Anybody wishing to take part in the Event must send the entry form, duly completed, to the secretariat of the Event (entry@emso.ae) along with the entry fees and copy of all the documents requested.

Any person wishing to take part in the **2021 Dubai International Baja** must send to the Secretariat the signed entry application accompanied by the amount of the entry fee that will be increased by 100% for the riders not accepting the optional advertising of the Organizers.

Up to the time of the Administrative checks, the rider shall be free to replace the motorcycle entered. If a motorcycle does not correspond, in its configuration when presented for the technical Controls for Scrutineering, to its entry category, the motorcycle concerned may, on a proposal by the Technical Stewards, be transferred by the International Jury to another category.

2021 SR 082.4. 2. Customs obligation – ATA Carnet

ATA CARNET IS COMPULSORY FOR TEMPORARY IMPORTATION IN THE UAE UNDER EMSO EVENTS.

10 DAYS BEFORE the goods leave for the UAE, the Competitors need to send to the Organization:

- A copy of the ATA CARNET (signed by the authorities of the country of the Competitor) will be requested by EMSO to prepare the temporary customs documents and facilitate the temporary import with the Shipping Agents. **NO OTHER DOCUMENTS WILL BE ACCEPTED.**

AS SOON AS the goods are loaded:

- A copy of the FINAL AIR WAYBILL (transportation by air) or BILL OF LADING (transportation by sea) and a copy of the vehicle registration need to be attached with the ATA Carnet.

2021 SR 082.4. 3. Team Entries

Team Entries / Award for Team Entries

Team entries must be composed of motorcycle / SSV and riders / drivers whose individual entries have been accepted. Each team may consist of **a maximum of 5 motorcycles or SSV and a minimum of 3.**

The performance of the best 3 motorcycles / SSV will count for the final results. No motorcycle may be included in more than one team eligible for the same award.

Each club, ecurie, manufacturer (represented by his Agent or Distributor in the UAE), may enter more than one team for the corresponding award, but for each award the same competitor may only be part of one team.

Motorcycles / FIM SSV included in a make team may not necessarily have been individually entered by the same entrant. In such a case the written approval of the individual entrant must be produced. They must however, be of the same make but not necessarily of the same model or type.

2021 SR 082.4. 4. Team entries names

Only the name of the Team with a 2021 Team Licence will appear on the official entry lists, official's documents, Press release and official results during the event.

The Competitors need to apply directly to FIM for a 2021 Team licence.

Contact: Gregory Ricci, email: gregory.ricci@fim.ch

For UAE Competitors, Competitors can apply directly with EMSO. Email: licence@emso.ae

2021 SR 082.4. 5. Services vehicles / Service Crews entries Conditions

Download the Service Vehicles & Service Crews entry form on the website.

When complete, please forward by email to: entry@emso.ae

All the Service Vehicles and Service Crews need to be registered.

A copy of the passport for each Service Crews member and the copy of the driving licence of the driver of the vehicle are requested.

COMPULSORY: All the Overseas Service Vehicles needs to be insured for UAE.

See Article 082.5 – Insurance.

IMPORTANT: If the service vehicle is an overseas vehicle, the registration card of the vehicle needs to be sent with the entry form with all the documents of shipping: airway bill (Transport by air) – Bill of lading (Transport by sea), ATA Carnet, etc.

2021 SR 082.4. 6. Entry fees for Rider, for Bike or Quad and FIM SSV

The entry application will only be accepted if accompanied by the total entry fees.

Reduced (50%) entry fees valid to 31th January 2021.

CONDITIONS FOR UAE & GGC RATES ENTRY FEES

Definition of UAE Entry: To be eligible for UAE entry rates, the Rider / Drivers needs to be in possession of a UAE Passport or relevant UAE residence visa valid for at least six months. In addition to a FIM Competition Licence issued by EMSO. If the riders rent a Bike, Quad or SSV outside UAE, the UAE rates will be applied.

Definition of GCC Entry: To be eligible for Gulf (GCC) entry rates, the Rider needs to be in possession of a Gulf Country passport or ID and relevant Gulf Country residence via, valid for at list six months. In addition to a FIM Competition Licence issued by one of the Gulf Country. If the Rider rent a bike in UAE or in another country, the GGC rates will be applied.

✓ Include – X not include	MOTO - QUAD		
Item	UAE	GCC	Overseas
Tracking & Timing (Sportraxx) - A deposit of €300 needs to be lodged @ Documentation for the safe return of equipment	✓	✓	✓
Navigation & Safety equipment (need to be order directly to ERTF) A deposit of €1,700 needs to be lodged @ Documentation for the safe return of equipment	X	X	X
Public Liability Insurance	✓	✓	✓
3rd Party Insurance (off Highway)			
Medical / Hospitalization / Repatriation Insurance	X	✓	✓
3rd Party Insurance (on Highway)	X	X	✓
Merchandise / Gift of the event	X	X	X
Fuel: petrol 98 & diesel from February 18 st @0700 to February 20 th @1600 – Near Service Park	✓	✓	✓
Travel visas for Competitors ONLY (for required nationalities)	X	X	✓
Entry Fee (AED) Valid until February 8th	3,520	4,620	–
Entry Fee (USD) Valid until February 8th 2021	–	–	1,410

All entries MUST be submitted to entry@emso.ae before the **closing date of 08th February 2021**.
ERTF equipment is mandatory but the cost is not included in the Entry Fee for the event.
The afore-mentioned cost must be paid directly by the competitor to ERTF.

2021 SR 082.4. 7. Entry fees for FIM SSV

✓ Include – X not include	SSV		
Item	UAE	GCC	Overseas
Tracking & Timing (Sportraxx) - A deposit of €300 needs to be lodged @ Documentation for the safe return of equipment	✓	✓	✓
Navigation & Safety equipment (need to be order directly to ERTF) A deposit of €1,700 needs to be lodged @ Documentation for the safe return of equipment	X	X	X
Public Liability Insurance	✓	✓	✓
3 rd Party Insurance (off Highway)			
Medical / Hospitalization / Repatriation Insurance	X	✓	✓
3 rd Party Insurance (on Highway)	X	X	✓
Fuel: petrol 98 & diesel from February 18 st @0700 to February 20 th @1600 – Near Service Park	✓	✓	✓
Travel visas for Competitors ONLY (for required nationalities)	X	X	✓
Entry Fee (AED) Valid until February 8th 2021	6,600	9,920	–
Entry Fee (USD) Valid until February 8th 2021	–	–	3,620

2021 SR 082.4. 8. Entry fees for Service Vehicle & Service Crews

For service crews attending the event, the following fees will apply:

Item <u>This package need to be booked and paid prior the closing date</u>	Cost (AED)	Cost (USD)
Vehicle Pass package, includes: <ul style="list-style-type: none"> Set of door plates For access to Innovation Centre / Service Park and Refuel tank maxi 250L <ul style="list-style-type: none"> Wristband for Service Crews (Maxi 2 for bike, Maxi 4 for car) <u>Passport copy is compulsory for each Team Member</u>	650	175

*Insurance not includes. On the responsibility of the crews.

Please complete the Service Crews/vehicle registration form and send back to entry@emso.ae along with your competitor entry forms **before 8th of February 2021**.

Please note that the EMSO will no longer organize UAE visas for Service Crews. Instead an 'Invite Letter' can be prepared upon request when the crews is officialy register and entry fees paid. This letter cannot be used for any Customs formalities.

2021 SR 082.4. 9. Payment details

The entry fee for Overseas and GCC Competitors, as laid out in these Regulations, is inclusive of Repatriation and Medical insurance.

A payment summary form will be sent to you upon receipt of your entry. When complete, it must be returned to the email indicated on the form.

Bank transfer details:

Beneficiary Name:	AUTOMOBILE & TOURING CLUB OF THE UAE
Account Number:	1015011174903
Bank Name:	Emirates NBD
Address:	P.O. Box 777, Baniyas Rd, Dubai, United Arab Emirates
Swift Code:	EBILAEAD
IBAN:	AE060260001015011174903

Please ensure that the entrant's or Driver name and account holder are included as reference on all bank transfers.

Please email to rocelle@emso.ae a copy of the bank transfer for reference and reconciliation purposes. The registration form will only be accepted if accompanied by the correct entry fees. Please note that VAT of 5% is included in the entry fee. Should you require an invoice, please provide correctly captured invoicing details on the payment summary form.

2021 SR 082.4. 10. Refunds

The Organizer will reimburse the entry fees, minus a variable retainer, to competitors who were unable to participate in the event for the reason of force majeure, subject to the written application to the Organizer. The deduction will be:

- 25% of the entry fee for the requests received until 60 days before the administrative checks.
- 50% of the entry fee for the requests received less than 60, but until 30 days before the administrative checks.
- 100% of the entry fee for the requests received less than 30 days before the administrative checks.

All the amounts will be refund maximum one month after the event.

2021 SR 082.4. 11. Entry refusal – Withdrawal – No show

The Organizing Committee reserves the right to refuse the admission of a rider without explanation. In that case the entry fees will be reimbursed.

2021 SR 082.4. 12. Cancellation or rescheduling of the event

The entry fees will be reimbursed in case the event is cancelled.

FIM 082.5 INSURANCE**2021 SR 082.5. 1. Public liability cover**

The entry fee includes cover for civil liability of the Competitor from 16th February 2021 to (and including) 21th February 2021.

Competitor vehicles are covered for Civil Liability towards Third Parties (Road Legal), from (and including) 16th February 2021 to (and including) 21th February 2021.

The insurance company: **Dubai National Insurance & Reinsurance P.S.C.**

Policy no.: 09/571/58C/2021/42

This cover provides for a maximum liability, in respect of any one claim or series of claims resulting from one accident, of USD 1,500,00.

Damages to rally and/or service cars as well as the liability of a crewmember towards other crewmembers are not covered by the insurance provided by the Organizers.

2022 SR 082.5. 2. Overseas & GCC entries Cover

An accident & Sickness Emergency Medical and Repatriation expense is included in the entry fee to a level of **AED 90,000 in excess of AED 15,000.**

2021 SR 082.5. 3. Declaration in case of accident

In case of an accident, leading to an insurance event, the competitor or his representative must make a written statement to the Clerk of the Course, the Competitors Relations Officer, or directly to the Organizer, within 24 hours. This statement must mention the accident circumstances, the names and addresses of the casualties, as well as contact. Any breach of this rule will be reported and may result in a penalty, at the discretion of the Jury International.

Nevertheless, if a driver taking part in the rally is involved in an accident in which a member of the public sustains physical injury, the driver concerned must report this to the next radio point as specified in the road book and point the place on the route. If he fails in observing this rule, the Stewards may impose a penalty to the responsible crew, which may go as far as disqualification.

2021 SR 082.5. 4. Individual accident insurance

It is highly recommended to take out additional individual accident insurance, which may allow the Competitors to cover additional costs, with an insurance company of their choice.

2021 SR 082.5. 5. FIM insurance include in your FIM licence

In case of accident, please follow the instructions on your FIM Licence.

2021 SR 082.5. 6. Medical insurance rules in UAE

It is important for all Competitors to fully understand the situation with regards Medical expenses according to the UAE rules.

In the event that "you" the registered competitor have an accident during the event and requires medical attention in a hospital then the following procedure needs to be followed:

- On release from Hospital any **Medical costs needs to be settled by you or third party before leaving the hospital.** The hospitals have been informed of this arrangement.

In case of accident, a claim form will be sent to you or third party by email, which needs to be completed along with the Hospital report and receipt.

Once received and verified, then these documents are forwarded onto our Insurance Company for review and process.

By the fact to sign your entry form, you fully understand the above, and that Medical costs must be settled before leaving the hospital.

2021 SR 082.5. 7. Road insurance for Overseas Service Vehicles

Competitors are reminded that Service Vehicles that are registered overseas, **entering by boat, by air or by road are not insured in the UAE.** The Organizer is able to ensure such vehicles for the duration of the event, provided that said vehicle/are registered with the Organization utilizing the official event SERVICE VEHICLE REGISTRATION FORM and notably, also submitting a clearly scanned color copy of the vehicle registration certificate (all pages/both sides). All documents will be verified at Administrative Checks.

Competitors are furthermore reminded that UAE Rental Vehicles and all insurance related obligations are the sole responsibility of the competitor.

FIM 082.6 ENTERED RIDERS

2021 SR 082.6. 1. Entry conditions for the Rider

- The Organizing Committee reserves the right to refuse the entry of a rider.
- **FIM LICENCE:** To be registered in **2021 Dubai International Baja**, any person over **18 years** from any country must hold a **2021 FIM Bajas World Cup or FIM Cross-Country Rallies World Championship licence** released by his own National Federation in accordance with art. 70.2.1 of the FIM Sporting Code and Art. 09.1 of the FIM Medical Code.
A 2021 FIM Bajas WC "one event licence" can be used for the event.
For SSV, Driver and Co-driver needs to have a 2021 FIM Licence World Cup or FIM Cross-Country Rallies World Championship.
- **DRIVING LICENCE:** The rider must obligatorily be a holder of a valid driving licence corresponding to the type and capacity of his/her Bike, Quad and FIM SSV.
ONLY FOR UAE Citizens and UAE Citizens holding a valid resident visa's:
Following the UAE laws, a person between 16 and 18 years old can obtain a driving licence to ride a bike or a quad in UAE. EMSO can process a 2021 FIM Licence for the event for eligible people. The procedures for holding a competition licence are the same as any other competition licence issued by the EMSO.
To complete the entry for the event, the competitors' parents have to sign the entry form of the event, and submit a signed waver stating their no-objection to enter the 2021 DIB.
- Any copy or statement of loss or theft of the previously mentioned documents will not be accepted, as it does not legally substitute the possession of a driving license conforming to the capacity of the motorcycle.
- Any rider who is replaced by another one on his motorcycle during the race will be excluded from it, as well as the motorcycle of this last-mentioned driver.
- The Rider is responsible of the behavior of his mechanics, his assistants, his manager, his Press staff and any infringement to the regulations will be borne by the Rider.
- The maximum number of motorcycles accepted is 100.

The rider enters the 2021 Dubai International Baja at his own risk, being fully aware of the danger associated with the event. For this reason, the rider relieves the Organizer, the FMNR and the FIM from any penal and/or civil responsibility in case of physical and/or material damages incurred as a result of his participation in the event. He/she agrees to indemnify, protect and hold harmless the Organizers, the FMNR and the FIM and anyone acting on their behalf or under their authority, including but not limited to their representatives, employees, agents, officials and volunteers, from and against any and all liability, penal and/or civil, loss, expense or claims of whatsoever nature, including but not limited to third party claims, relating to injury to persons, including death, or loss or destruction of or damage to property arising in connection with his/her participation in the 2020 Dubai International Baja.

By the fact to sign your entry form, you fully understand and accept the above.

2021 SR 082.6. 2. Cover Images – Image rights

- The Riders & his Team recognize that the 2021 Dubai International Baja is a promotional operation from which they can benefit by the coverage they acquire there.
- The Organiser holds all the rights necessary for the production and retransmission, by all means and in all mediums, all over the world, images and sounds related to this event.
- In order to allow the widest possible dissemination and promotion of the 2021 Dubai International Baja, any person participating in the Rally is subject to the rules and

acknowledges that his participation in the event authorizes the organizer and his rights holders, or others having cause to reproduce and represent, without remuneration of any kind, his names, voice, image, biography and more generally his sports performance in the framework of the Rally 2021 as well as the brand/s of its suppliers, manufacturers and sponsors, in any form, on any existing or future medium, in any format, for any communication to the public worldwide, for any use including for advertising and / or commercial purposes without any other limitation than those referred to below, and for the duration of the protection currently granted to these holdings by the laws or regulations, the judicial and/or arbitral awards from any country as well as current or future international conventions, including any extensions that may be made to this duration.

- The participants concede to the Organiser, in name and on behalf of their sponsors and/or the manufacturer of their vehicle, the right, as part of any exploitation derived from the event, including sponsors and media of the event, to reproduce in whole or in part at the discretion of the organizer on any existing or future support, worldwide, without any limitation, for the most longest duration legally recognized by both UAE and foreign laws, current or future international conventions including for any extensions that may be made to this duration, names, trademarks or logos of said sponsors and / or visual machines/vehicles.

- **As a reminder, aerial images (drone/helicopter etc.) are strictly forbidden for the 2021 Dubai International Baja outside the official TV production of the organization.**

The shooting of images of competitors participating in the Rally, whatever the means used and the purpose in which they are filmed, are subject to prior written authorization from the organizer.

For this purpose, written applications must be sent no later than **8th of February 2021** preceding the start of the event.

2021 SR 082.6. 3. Particular conditions of visited countries

See Rally Guide on the website.

2021 SR 082.6.1 1. Bib numbers

The race number will be allocated according to the results of the 2020 FIM Bajas World Cup.

A rider who wants a specific number for 2021 Dubai International Baja must make a request to FIM Administration before 8 of February 2021.

FIM 082.7 MOTORCYCLES / SSV, CATEG. & OTHER SPECIFICATIONS

2021 SR 082.7.1. 1. Categories & Classes

Category 1: Bike 450cc

Category 2: Quad

Category 3: SSV

Class 1: Women

Class 2: Junior

Class 3: Veteran

2021 SR 082.7.1. 2. Organizer Category

Category 4: Over 450cc

Over 450cc, this will not count towards for FIM Bajas World Cup.

2021 SR 082.7.1. 3. UAE and GCC laws and rules for bikes, quads and SSV

According to the GCC Laws and rules, the motorcycles and quads don't need a registration certificate in the UAE to ride in the desert, the motorcycles and quads registered in the vent must respect the FIM Sporting and technical rules but don't need a registration certificate.

This is only valid if the event doesn't have roads sections.

2021 SR 082.7.4. 1. Identification

1 – Number plates & advertising stickers

The Organizer will provide to each rider a set of identification plates comprising 1 front plate and 2 side plates, called number plates and advertising stickers at Documentation.

The absence of or incorrect affixing of a racing panel or plate shall result, for each offence noted, in a time penalty as stated in the Supplementary Regulations.

2 – Bib number plates

The Organizer will also provide at Documentation one bib measuring **24 or 26 cm x 30 cm**, bearing the racing number which should be clearly worn on the rider's back during the Rally.

The race bib cannot be cut and/or modified, not hidden by anything like a 'camel bag' and shall always be visible.

Before the start of each stage, the simultaneous absence or incorrect affixing of at least two racing plates or bib shall result in disqualification from the Rally.

In case of damage, the Rider must inform the Competitors' Relation Officer, who will provide a replacement in exchange for the damaged item.

3 – Wristband

An identification wristband will provide identification for the rider. All default noted by an official will result in penalties equivalent to 10% of the entry fees.

In case of damage to the bracelet, the rider must inform the Competitors' Relation Officer, who will provide a replacement in exchange for the damaged item.

2021 SR 082.7.5. 1. Advertising

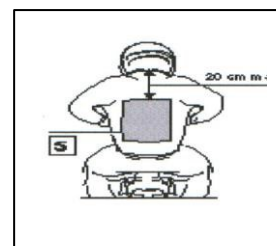
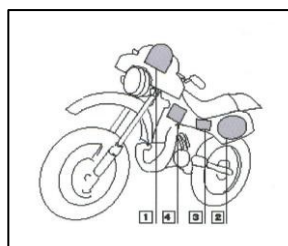
Competitors shall be free to affix any advertising on their motorcycles provided that it:

- Is authorized by the FIM Rules and the laws of the UAE.
- Is not contrary to public decency and customs,
- Does not overlap on those areas that are reserved for the plates.

Note: The advertising of alcohol, or related products, politics, etc. is illegal.

1 – Layout of the advertising

- Front plate **24cm x 30cm**
- Two side plates, **24cm x 30cm**
- 2 advertising panels, **12cm x 8cm**
- 2 advertising panels, **12cm x 12cm**
- Race bibs **26cm x 30cm**



These areas are for the Organizers and can be bought back at a cost of **US\$ 1,500**

- An area 12cm x 12cm on each side of the front of the tank
- An area 12cm x 8cm on each side at the back of the motorcycle, on a vertical surface. It is the rider's responsibility to check that none of the Organizers advertising areas are missing, masked or damaged.

It is the rider's responsibility to ensure that the position of their bibs allows complete visibility of the rally number.

A financial penalty will be imposed if the above is not complied with.

FIM 082.8 TECHNICAL INSPECTION & ADMINISTRATIVE CONTROL

2021 SR 082.8.1 1. Administrative obligations

General documentation checks will be made prior to the start of the 2021 DIB at documentation on **Thursday 18th February 2021** at Dubai Innovation Centre.

Each Rider needs to be present, according to the published times schedule for Administrative & Technical checks.

The Administrative and Scrutineering schedule for all competitors will be posted on the website, Sportity App and on the Official Notice Board and will be also writing to each scrutineering book given to the competitor at documentation.

EACH RIDER needs to present:

- 2021 FIM Bajas World Cup licence (Annual or One Event) or 2021 FIM Cross-Country Rallies World Championship licence (Annual).
Please note that the International Meetings Cross-Countries Rallies licence **IS NOT VALID for 2021 Dubai International Baja.**
- Passport (and visa for nationalities who require a visa in advance of travelling)
- A valid driving licence corresponding to the type and capacity of machine used
- **A parent's authorization if the Rider is less than 18 years old**
- **A COVID-19 negative test to enter in the event area. Validity 48h**
See 2021 Dubai International Baja COVID-19 PROTOCOL on the website.

Documents for the Bike, Quad or SSV

- **Registration documents for the machine and Certificate of ownership.**
THIS IS VALID ONLY WHEN THE EVENT DOESN'T HAVE ROAD SECTION.

According to the fact that the off road vehicle does not need registration in the UAE and GCC countries to satisfied the formalities requested for Documentation, the Competitor will have to supply the Customs certificate or an invoice that specifies:

- The name of the owner
- The type of vehicle
- The chassis number
- If you are not the owner, attached with the previous document, we need a supporting letter from the owner where it's specified that you have permission to use the bike for DIB and where the chassis number and your name is mentioned.
- Letter of authority if a motorcycle or quad does not belong to the registered competitor
- Motorcycle insurance documents
- Signing of the Indemnity Form.

2021 SR 082.8.2 1. Preliminary Technical Inspection

EACH MACHINE (Bike / Quad or FIM SSV)

Only those riders who have successfully completed the Documentation / Administrative checks may present their Machine at **Scrutineering on Thursday 18th February 2022** at **Dubai Innovation Centre** in accordance with the published time schedule.

Competitors are requested to abide by their due time – penalties will be given if late. All identification and advertising stickers must be in place on the machine when it is submitted to the scrutineers.

Failure to report to Scrutineering at the due time will result in a cash penalty of **AED 1,000.00**.

Competitors must also present the following equipment for inspection:

- Helmet
- Neck protector (recommended but not compulsory)
- Security Airbag (recommended but not compulsory)
if the rider decides to wear the neck protector, he cannot wear the airbag vest, these two elements are incompatible
- Riding kit
- GPS / Sentinel
- Tracking Device(s)

- Signaling kit (recommended but not compulsory)
- Additional water ration Camelback
- Spare engine for marking (if applicable) with a separate gearbox connected to it
- Silencer (motorcycles must pass the noise control test, carried out according to Art. 01.79 of the Bajas Technical Rules, during the scrutineering and marked by the organizer). The maximum limit of sound level, using 2 meters max method is fixed at 115dB/A, +1 dB/A before the race and at 116 + 1 dB/A during and after the race.
- Mobile telephone
- Medical kit (recommended but not compulsory)

REMEMBER: The rider's name needs to be marked on his/her helmet and on each side of the machine.

It is not necessary for the motorcycle to have indicators, headlights, speedometer or wing mirrors fitted.

2021 SR 082.8.4. 1. Technical Inspection at the end of the event

Place: Dubai Innovation Centre, Parking
Times: **13h00 on Saturday 20th February 2021.**

FIM 082.9 FUEL

2021 SR 082.9. 1. Fuel facility & procedure

The organizer will provide fuel (location of the tanker will be published later), and designated refuelling zones as per the road book. it is included in the entry fees (riders and service vehicles bearing identification stickers).

The Petrol station will be open from the dates and times listed below.

February 18, 2021	@ 0700 to 1800 hours
February 19, 2021	@ 0700 to 2000 hours
February 20, 2021	@ 0700 to 1400 hours

2021 SR 082.9. 2. Fuel on road sections

When specified in the road book, on road sections where service stations can supply Super 95 or 98 fuels it is the responsibility of the riders to fill up at their own expense.

Transport of fuel in any other way than in fuel tanks designed for this purpose is forbidden. Similarly, transport of objects, parts, and tools... susceptible to cause injuries to a rider (back pack, belt...) is forbidden. Failure to respect this rule will result in the start being refused.

FIM 082.10 BAJA HEADQUARTERS / RALLY CONTROL

2021 SR 082.10. 1. Rally Control EMERGENCY NUMBER

The Rally Control team can be reached at any time in an emergency ONLY on

00971 (0)50 875 4750

The emergency number will be written on the ID Bracelet.

Misuse of this emergency contact number may be met with a penalty by the Organizers.

FIM 082.11 ROUTE

2021 SR 082.11. 1. Forbidden Reconnaissance

Any form of reconnaissance of the route, whether by a Rider himself or any party associated, directly or indirectly, with a Rider is strictly prohibited.

The possession of route notes, other than those issued by the Organizers of the 2021 Dubai International Baja, or the storage of GPS waypoints from previous years' events is prohibited. Competitors who fail to observe these bans will be refused a Start or will be disqualified from the event. A commercially available map, free of any markings, other than those deduced from the Organizer's road book couldn't be carried on board a competing vehicle.

2021 SR 082.11. 2. Road Book

There is no Electronic Road book for 2021 Dubai International Baja.

The modifications of the opening team will be IN the road book.

Please remember: The only official route is the one in the Road Book.

The GPS Code will be given at the start of the road section each morning.

All the riders will receive a Road Book (roll).

The Road Book covering Start to TC 1 (Stage 1 Start) will be issued at Documentation.

The Road Book (Roll) covering Stage 1 and the Liaison sections to TC 2 ((Stage 2 Start) will be issued at TC 1, 20 mins before the individual's due Stage Start time.

The Road Book (Roll) covering Stage 2 and the Liaison section to TC 2B (Parc Ferme) will be issued at TC 2, 20 mins before the individual's due Stage Start time.

Please note:

The addition of any information on the road book, bike and pilot:

- Cap(s)
- Geographic(s) indication(s) that could be useful for navigation
- Distance(s)
- GPS point(s)

different from the ones already on the road book itself and on the opening notes provided by the Organization are strictly forbidden.

Controls will be operated. The road book used by the Rider or the Crew members will have to be given in full upon request at the end of the Special or Road Section to the Marshal or officials in charge of their collection.

Any Pilot or Crew who does not respect those rules will be sanctioned by:

- **1st infraction: 3 hours penalty**
- **2nd infraction: Disqualification**

Any missing or lost road book will be considered as an infraction.

2021 SR 082.11. 3. Official Itinerary

The official route of the Baja is described in the road book given to the competitors and must be strictly followed, on pain of a penalty which may lead as far as disqualification from the rally.

The official itinerary of the Baja is defined by a number of Visible Way Points (WPV) and Eclipsed Way Points (WPE). All the GPS points will be considered as COMPULSORY passage points.

In any case the competitor can force the GPS to address to another WPT, pushing the "WPT+" or "WPT-" button.

The road book has been composed to indicate the route to follow, some GPS points and the main dangers.

2021 SR 082.11. 4. Waypoints

Waypoints	Unmasking	Validation	Application	Coordinates Disclosed
WPV	Open	200m	DSS,	Yes
WPE	On validation of previous	200m	FZ, CP, General WPs where CAP navigation is not	Yes
WPE for	On validation of previous	90m	Where DZS is located at end of long HP / desert section and	Yes
			required for navigation and CAP is not possible.	
WPM	1 Km	200m	General WPs which can be navigated using Road Book instructions, on piste, or CAP.	No
WPS	3 Km	90m	1. DZS 2. Security / Safety locations where 90 m validation is required.	No

2021 SR 082.11. 5. Navigation rules

Throughout the Baja, each Rider is responsible for the correct functioning of his GPS, downloaded with the Organization's points. The GPS must be connected to the power source at all times (Liaison & Special).

Each malfunction must be communicated to Clerk of Course or the CRO. Any evidence of manipulation may be penalized as far as disqualification from the rally as determined by the International Jury.

2021 SR 082.11. 6. Penalties

For every Stage, the penalties for WP missing will be:

- **WPV, WPM, WPE, WPC, DZ, FZ: 20 minutes**
- **WPS: 120 minutes.**

2021 SR 082.11. 7. Traffic regulations

2021 Dubai International Baja is divided in 2 stages with road sections.

Throughout the duration of the Rally the Riders must strictly comply with the traffic regulations of the UAE. Any competitor who does not comply with these requirements will be penalized.

If the Police stops a Rider, the Rider needs to inform immediately Rally Control. Keep calm. An Arabic letter will be given at Documentation to show to the Police in case they stop you.

2021 SR 082.11. 8. Crossing of inhabited areas

• **Riders**

Along inhabited areas crossed in the liaison sections as well as along the Specials, the speed will be strictly limited as specified by the local sign panels. All areas that are considered dangerous for riders and for local inhabitants will be indicated in the road book.

• **Assistance: Service Vehicles**

The speed of all assistance vehicles in crossed cities and villages, following the assistance



road book, will be limited as specified by the local sign panels. Overtaking is also forbidden. The Organizing Staff will make controls and the International Jury can decide the penalties.

FIM 082.12 STAGES

2021 SR 082.12. 1. Private tests

Riders who wish to perform private tests during any part of the year are obliged to notify the Organizers of their intentions, with details of dates/timing and obtain written permission. On application, areas within which it is permitted to test will be advised to the applicant.

2021 SR 082.12. 2. Test Stage / Shakedown

Specific details and procedures for utilisation of a test stage will be publicized during the week prior to the event.

A map with the location will be available at Rally HQ. Teams making use of the facility will be responsible for arranging all safety aspects, etc. themselves and need to remain wary that the location could be in use by more than one team simultaneously. Organizers accept no liability for any related Test Stage activities.

One week prior to the commencement of event Administrative checks, please register your intention to utilize the facility by sending an e-mail to bryan@emso.ae.

SHAKEDOWN ONLY ALLOWED on February 18th after machine has successfully completed Scrutineering. Used of the shakedown area NOT PERMITTED after 17h30.

2021 SR 082.12. 3. Distance of the Stages

Distance

Overall distance for Selective Sections (SS): **387,18 km**

Liaison Sections: **39,70 km**

Total distance of the itinerary: **426,68 km**

Number of legs

The Baja will be run with **2 legs**

Number of Selective Sections (SS)

The rally will be run with **2 SS**

Average altitude

The average altitude of the total distance of selective sections is **147 m.**

2021 SR 082.12. 4. Schedules of stages

Day	Date	Action	Time	Place
Thursday	February 18 th	Leg 1 Start List - Publication	18:30	Rally HQ & Sportity
Friday	February 19 th	Leg 1: Innovation Centre / Innovation Centre (SS 1)		192,23 km
		Leg 1 Prov. Class / Leg 2 St List	19:00	-
Saturday	February 20 th	Leg 2: Innovation Centre / Innovation Centre (SS 2)		194,75 km
		Leg 2 Prov. Class	16:00	-

FIM 082.13 SUPER SPECIAL STAGE (SSS)

There is no Super Special Stage.

FIM 082.14 SELECTIVE SECTORS (SS)

2021 SR 082.14.1 1. Distance of the Selective sections

The km of each stage will be the same for all the Categories: 1, 2, 3 et 4.

The length will no exceed **195 km**.

Refuelling zone will be around **65 km for** each leg.

2021 SR 082.14.1 2. No start or abandon in a Selective Section / Stage

A rider not present at the start of a Stage and who did not inform the race direction in any manner will be disqualified.

The rider who does not wish or cannot start a Stage must still present himself, be represented by somebody at the start of the Stage or have informed the Clerk of the Course before the start of the Stage. In this case, he will receive a penalty as follows:

- **Two (2) hours Penalty**

The rider who starts a stage and then leaves the Stage Selective Section will receive the following penalty:

- **Maximum time allowed for the Selective Section + 60 minutes penalty.**

FIM 082.15 STARTING ORDER

2021 SR 082.15.1. 1. Minimum interval between the last Bike/Quad & the 1st FIA car

The last Bike/Quad will be scheduled to start **60 minutes before the first FIA car**. Should the last Bike/Quad report late, but within his maximum lateness, the first car will still start on schedule.

2021 SR 082.15.1. 2. Minimum interval between the last FIA Car & 1st FIM SSV

The Competitor in category 3 FIM SSV will start **10 minutes after the last FIA car**.

2021 SR 082.15.3. 1. First and second Stage

The starting order of Leg 1 will be according to the reverse order of the rider's race number for the top 10 riders. The remaining riders outside the top 10, will start according to their race number.

- The top 10 riders will start one by one, every 2 minutes. The others riders will start individually, at one-minute intervals.
- The starting order of the second Stage will be made in the order of the Selective Section overall classification, or the accumulation of the Selective Sections of the previous day.

2021 SR 082.15.6 1. Change in the start order - Repositioning

The number of repositioning is ONE.

The request needs to be done to the Clerk of Course **before 17h00** on the day prior to the next stage.

Only the request presented by the Rider on the Official form given by the Clerk of Course will be accepted.

In no case can such a repositioned rider start in front of a rider appearing among the first ten in the starting list of the next stage.

2021 SR 082.15.7 1. Collective Start (Mass Start)

There will be no mass starts.

FIM 082.16 SERVICING AND REFUELLING

2021 SR 082.16.1 1. Assistance at the refuelling

NO assistance during the stage.

Only riders are allowed to help other competitors.

2021 SR 082.16.1 2. Tyres

PADDLES tyres are not allowed for the 2021 Dubai International Baja.

2021 SR 082.16.1 3. Team personnel / Service Crews

Each competitor is reminded that he/she is jointly and severally responsible for his or her service teams and accompanying persons. It's compulsory to register all the Service Crews.

Any infringements of the regulations, as published by the FIA and the Organizers, that are officially observed, as well as use of unauthorized equipment – whether or not this has a direct or indirect influence on the results or sporting running of the event – will be judged by the Panel of Stewards of the Meeting who will be entitled to decide as far as the disqualification from the event of the competitor(s) involved, directly or indirectly.

The ID bracelet, correctly attached to the wrist of competitors, crew and service personnel, is considered the only authorization to be present in an official location, service area and the bivouac. Personnel must show the ID bracelet at any time on request. A crew receiving assistance in any form from third parties not identified by the wearing of the ID bracelet are subject to a penalty of \$100 and up to and including disqualification.

For any infringement of this rule a penalty of up to and including disqualification from the event may be imposed by the Stewards of the Meeting on the competitor for whom the transgressors are servicing.

2021 SR 082.16.2 1. Service Park

The 2021 DIB Service Park will be in the vicinity of Innovation Centre - Dubai

Access times for service crews and service vehicles, **ACCORDING TO 2021 DIB COVID-19 PROTOCOL (See Annexe 1)**

Only the Competitors and racing vehicles, Service Crews and Service Vehicles are allowed to enter in Innovation Centre.

The movement of service/assistance vehicles is strictly controlled and is forbidden along the route of any Selective Section.

A layout of the Bivouac / Service Park will be sent to the Competitors one week before the event.

2021 SR 082.16.4. 1. Refuelling by Organizer with tanker

The refuelling will be provided by the Organiser at:

- Dubai Innovation Centre, inside refueling zone
- During the Special Stage (tanker) inside the refueling zone (FIM and Nat. only).

2021 SR 082.16.4. 2. Fuel / Autonomy

Each rider is responsible for calculating their fuel range to cover the minimum distance of 65 Km for safety reasons a 10% margin is indispensable. We are introducing 2 refuelling points along the route this year that will allow you use your standard fuel tanks for the bikes.

2021 SR 082.16.4. 3. Refuelling during a Selective Sections

As the refueling zone is not a servicing area, all external assistance / service on a machine is forbidden during refueling on pain of penalties at the discretion of the FIM Jury.

Only riders are allowed to help other competitors.

External assistance / Service are allowed only at the Bivouac.

The neutralization for the refueling will be 15 minutes.

2021 SR 082.16.4. 4. Automatic Control for refueling and neutralizations

The neutralization period for refueling will be virtually controlled by the ERTF device.

The departure time of the end of the refueling / Neutralizations will be given by the GPS. Participants will be allowed to enter the starting area 1 minute before their ideal departure time. Any advancement in this control will be penalized in the following manner:

- For the first 5 minutes: penalty of 2 minutes every 30 seconds.
 - For an advance of more than 5 minutes: penalty of 5 minutes every 30 seconds.
- a) The GPS -mandatory to all racing vehicles- will record the times of passage at the entry and exit WP of the NEU. This information will allow the control of every NEU.
 - b) The allocated times for neutralization are written on the Road Book and recorded in the GPS, which will indicate that the entry WP of the NEU has been validated. Once the entry point is validated, the GPS screen will indicate the NEU entry time in h, min, s and will open a countdown with the time allocated to realize the NEU.
 - c) 100 m before the exit of the NEU, there will be a yellow panel with a clock. The CCR will only be authorized to pass the panel within the last 60 seconds of the allocated time of the NEU. Approximately 100 m after the yellow panel, a red one will indicate the place where the WP shows the end of the NEU.
 - d) Verifying that the allocated time for the NEU is respected is at the entire responsibility of the pilot; in no case a claim will be accepted regarding the location of the NEU entry and exit panels, as the entry and exit WP are visible in the mandatory GPS.

FIM 082.18 CONTROL ZONES

2021 SR 082.18 1. Technical Time Control (CHT)

The CHT is a virtual time control, which will not be materialised by any panel or systematic control. It is located in the regrouping zone before the CH (special departure Time Control) and is revealed only by the intervention of a technician (GPS, Tracking).

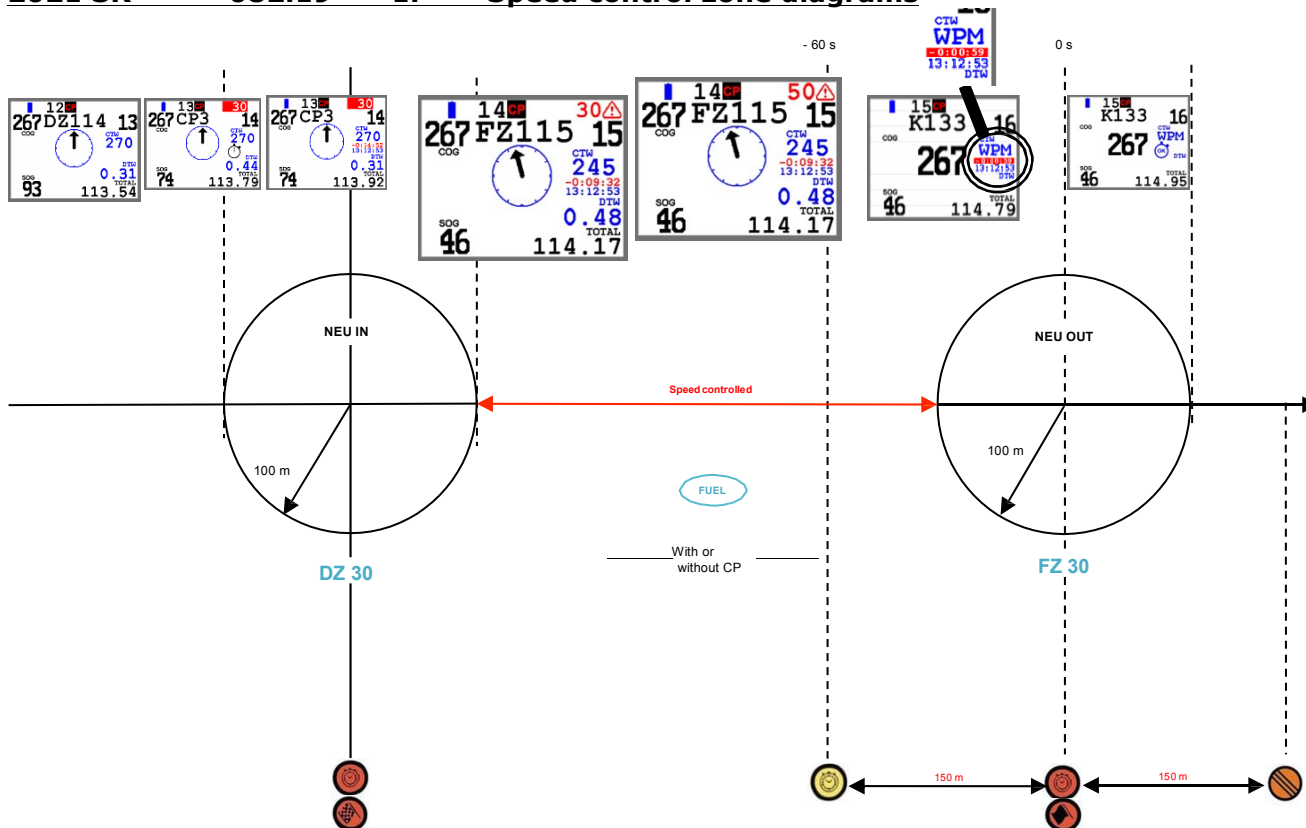
All competitors must be present 15 minutes before their theoretical start time to allow technicians to fix any problems. The CHT of a competitor is its theoretical starting time of special minus 15 minutes. The time allocated to the liaison will take into consideration this arrival 15 minutes earlier.

Before the CHT of a competitor, a technician (GPS, Tracking) can be brought to intervene on his machine. If the competitor is not present, a fixed penalty of 15 minutes will apply.

A competitor who has technical problem on his device/instrument (GPS, Tracking) can fix it with the technician present at the regrouping zone of the CH (special departure Time Control). He must absolutely do it before his CHT in which case a fixed penalty will apply.

FIM 082.19 SPEED CONTROL ZONE

2021 SR 082.19 1. Speed control zone diagrams



FIM 082.21 PASSAGE CONTROLS

2021 SR 082.21.2. 1. Passage Control Penalties

All controls must be passed in the order defined by the Road Book.

Competitors are required to stop within the Passage Control Zone to have the Time Card stamped by the PC Controller. Failure to visit any Passage Control will result in a time penalty as in art. 082.21.

- **Missing a CP ie missing the WPS: 120'**

- **Missing stamp at a CP: 5'**

The controller at each PC will record the time of entry of each competitor in minutes and seconds. In the event the Special Stage is shortened, due to 'force majeure' the times recorded at the last Passage Control will determine the finish times of that Selective

FIM 082.24 FIXED PENALTIES (PF) / SPORT PENALTIES (PS)

2021 SR 082.24. 1. FP and SP value

- **A fixed penalty (FP) of 2 hours** will be applied to competitors who fail to complete a Section within the Maximum Time Allowed for that section.
- **A Sporting penalty (SP) of 2 hours** will be applied to competitors who miss or fail to complete a Section.
- **Maximum number of SP to score points: 2.**

FIM 082.25 PARC FERME (CLOSED PARK)

2021 SR 082.25 1. Parc Ferme location during the Event

The bikes, Quads and SSV will be in Parc Ferme at innovation Center:

- **At 18:20, Thursday 18th February**
- **At the end of day 1 before and after 2 hour Flexi Service**
- **At the end of day 2 at the finish of the leg.**

One minutes late, is one minutes penalties.

FIM 082.27 SAFETY EQUIPMENT

2021 SR 082.27.1. 1. GPS UNIK II with integrated Sentinel

The mandatory equipment is not included in the cost of the Entry Fee or ordered on the competitors' behalf by the Organizers.

Any rider requiring mounting brackets or wishing to purchase their own equipment, can ERTF.

The order form can be downloading on www.dubaiinternationalbaja.com

All riders should contact:

ERTF Off-Road Rallye Department

Parc Technologique De Soye

56275 Ploemeur Cedex, France

Tel: +33 (0)2 97 87 25 85 - E-mail: competition@ertf.com

website: www.ertf.com

2021 SR 082.27.1 2. Tracking System

A dual GSM/Satellite Tracking System supplied by Sportraxx will be used. The cost of the service has been included in the Entry Fee and no additional brackets, wiring or aerials need to be purchased or fitted.

2021 SR 082.27.1. 3. Helping at an accident

It must be remembered that ethics demands that a rider who sees that an accident has occurred must stop in order to provide assistance in the most appropriate manner until the rescue service arrives. Also, it must be remembered that major means are implemented to shorten the intervention times.

Any rider that witnesses an accident placing another competitor in physical danger must:

- Stop,
- Press the SOS button on their tracking System,
- Establish contact with rally HQ to report the situation,
- Wait for the rescue service or another competitor to arrive, and then,
- Inform Rally HQ when that they are leaving the scene.

At the request of the competitor on arrival at the end of the Leg before 17h00, the stopping time during the incident will be deducted from the time taken to cover the Selective Section.

Any competitor not complying with the above regulations will be reported to the Stewards who may impose penalties up to and including exclusion from the event.

- **It is only for the first two riders.**

FIM 082.28 ENVIRONMENT

2021 SR 082.28. 1. Protecting the Environment

Each participant and/or team member is responsible for the waste generated by his team during the event.

The Organizers will provide facilities for waste and used oil collection. It is strictly forbidden to empty onto the ground waste water or oil and any infraction to this rule will be reported to the International Jury who will fine the rider responsible a maximum of **EUR 200**.

Where refueling or servicing of a motorcycle is being undertaken measures must be taken to protect the ground. Participants should use environmental mats or other suitable means to cover the ground. This is also compulsory when an electrical generator or any other device with a thermic engine is being refueled or serviced by the rider or the team.

Sensitive area around Innovation Centre must be respected and details will be provided at the compulsory competitors briefing on Thursday 18th February 2021.

Any infringement by the participant (who is responsible for his team) of the FIM Environmental Code can result in a fine, disqualification from the event or suspension, and may also result in the participant or rider being liable for any costs of rectification.

FIM 082.30 RETIREMENT - DISQUALIFICATION

2021 SR 082.30 1. Number plate cross out in black

In case of retirement or disqualification, the Rider has to cross out in black the number plates and the number of the race under penalty of a fine of **500 EUR** and other possible sanctions pronounced by the FIM International Jury.

FIM 082.31 CLOSURE OF TRACK

2021 SR 082.31 1. Mechanical problem

In the event of a mechanical failure/retirement during a Leg, in this case, you must notify the Clerk of the Course that you consider yourself to be retired on that Leg and request his permission to recover the machine or vehicle and/or receive outside assistance (Authorized Assistance). You can wait for the Sweep/Course Closing Team to arrive and they will take you back to the Service Park.

A Rider who retires from a leg but intends to restart must hand in his time card immediately on arrival at the Bivouac. Failure to hand in the time card will incur a penalty of 5 hours.

For category 3, FIM SSV only the crews can be transported. You must make your own personal arrangements, at your cost, for the recovery of your vehicle.

FIM 082.32 CLASSIFICATION

2021 SR 082.32. 1. General

All the various classifications will be published on the Official notice board at the Rally HQ, website and Sportity.

FIM 082.33 PROTESTS - APPEALS

2021 SR 082.33. 1. Amount of the protest

The amount of the protest deposit is **700 USD**.

FIM 082.34 FINISH OF THE BAJA & PRIZE-GIVING CEREMONY

2021 SR 082.34. 1. Procedure

1. Parc Ferme

On Saturday 20th February, all the vehicles will enter in "Parc Ferme" inside the Service Park after completing Leg 2.

2. Navigation & Safety devises

Before entering in "Parc Ferme" all navigation and safety devises would be removed by the service provided.

3. Deposit

The onus is on the Competitor to immediately collect the holding deposit from EMSO Account Department in Documentation room.



In case of deposit refund by bank transfer requested by the Competitor or Team, a mandatory electronic transfer fees would be systematically applied.

4. Post event Scrutineering

For Moto – Quad: The machines nominated will be inspected at the same scrutineering area as initial scrutineering was conducted, located in the Innovation Centre parking lot.

2021 SR 082.34. 2. Ceremonial Podium Finish / Prize-Giving

The prize giving ceremony will start on Saturday 20th February 2021 at 17:15 inside the Service Park in conjunction with the Podium Ceremonial finish.

2021 SR 082.34. 3. List of prizes – Cups

1. For each FIM Category and Class:

- 1st, 2nd and 3rd Place One trophy (2 for SSV)



2. Other Awards

Over 450cc*

- 1st Place

One trophy

3. Team Award

1 Trophy per rider (max. 5 riders)

4. GCC Competitors*

- 1st, 2nd and 3rd Place

One trophy.

APPENDIX 1 – 2021 DUBAI INTERNATIONAL BAJA COVID-19 PROTOCOL

Please download the document on the website www.dubaiinternationalbaja.com

APPENDIX 2 – ITINERARY MOTO - QUAD - SSV

Dubai International Baja 2021 - Itinerary - Moto

TC	Location	SS	Liaison	Total	Target	Ist Comp.	MAX
SS		Km	Km	Km	Time	Due	
Leg 1 Moto					Friday 19 February 2021		
Sunrise 06:24					Sunset 18:34		
0	Start - Innovation Centre					07:01	Section 1
	Roadbook Issue (pre TC 1)					07:41	
1	Al Qudra Desert		10,20	10,20	00:55	07:56	
DSS 1	Al Qudra				00:05	08:01	
RP 1	WP 109	17,44				08:13	
RP 2	WP 116	28,96				08:20	
NEUTRALISATION ZONE - 15'							
RZ 1	Refuelling Zone	65,00				08:45	
	Distance to next Refuel - 63.26						
RP 3	WP 150	82,70				09:11	
NEUTRALISATION ZONE - 15'							
RZ 2	Refuelling Zone	128,26				09:42	
	Distance to next Refuel - 64.97						
PC 1	Al Qudra Desert	128,36				09:52	
RP 4	WP 194	156,84				10:16	
ASS 1	Al Qudra Desert	192,23		202,43		10:42	
1A	Parc Ferme "In" - Innovation Ctr.		9,70	212,13	00:30	11:12	
1B	Parc Ferme "Out" / Service "In"						
	Flexi Service						
1C	Service "Out" / Parc Ferme "In"				02:00		
LEG 1 TOTALS		192,23	19,90	212,13			
		90.4%	9.6%	100%			
Leg 2 Moto					Saturday 20th February 2021		
Sunrise 06:23					Sunset 18:35		
1D	Re Start - Innovation Centre					08:01	Section 2
	Roadbook Issue (pre TC 2)					08:41	
2	Al Qudra Desert		10,00	10,00	00:55	08:56	
DSS 2	Al Marmoun				00:05	09:01	
RP 5	WP 521	25,34				09:19	
NEUTRALISATION ZONE - 15'							
PC 1	Al Qudra Desert	64,53				09:45	
RZ 3	Refuelling Zone	65,00				09:46	
	Distance to next Refuel - 64.75						
RP 6	WP 568	79,32				10:10	
NEUTRALISATION ZONE - 15'							
RZ 4	Refuelling Zone	129,75				10:44	
	Distance to next Refuel - 66.00						
RP 7	WP 610	140,48				11:07	
RP 8	WP 631	166,32				11:24	
ASS 2	Al Qudra Desert	194,75		204,75		11:44	
2A	Service "In" - Innovation Ctr.		9,80	214,55	00:30	12:14	
2B	Service "Out" / Parc Ferme "In"				00:20	12:34	
	Finish Ceremony - Innovation Centre					17:15	
LEG 2 TOTALS		194,75	19,80	214,55			
		90.5%	9.5%	100%			
EVENT TOTALS		387,18	39,70	426,68			
		90.4%	9.6%	100%			

APPENDIX 3 – FIA ROAD BOOK LEXICON

TRACKS		ZONES		SYMBOLS		SYMBOLS		ABBREVIATIONS	
	TARMAC ROAD		START		FENCE		PETROL STATION		LEFT RIGHT
	TRACK		DEPARTURE SELECTIVE SECTION		BARBED WIRE FENCE		MONUMENT		LEFT AND RIGHT
	OFF PISTE OFF TRACK		FINISH		RAILROAD		ANIMALS INDIVIDUAL		RIGHT AND LEFT
	LESS VISIBLE OLD TRACK		ARRIVAL SELECTIVE SECTION		HOLE		ANIMALS		ON THE LEFT ON THE RIGHT
	PISTE TRACK		TIME CONTROL		HOLE COLLAPS		CAIRN		KEEP TO THE LEFT
	MAIN PISTE MAIN TRACK		CONTROL ZONE END		BUMPY		ROCKS INDIVIDUAL		KEEP TO THE RIGHT
	ROAD		START OF SERVICE AREA		TWISTY		MOUNTAIN INDIVIDUAL		KEEP STRAIGHT
	PARALLEL TRACKS		FINISH OF SERVICE AREA		SUMMIT		TREE INDIVIDUAL		MORE / LESS VISIBLE
	OFF PISTE		PASSAGE CONTROL		RUTS		PALM TREE		MORE VISIBLE
	OFF PISTE FORBIDDEN		START OF NEUTRALISATION		LATERAL INCLINATION		CAMEL GRASS		LESS VISIBLE
	FOLLOW MAIN PISTE		FINISH OF NEUTRALISATION		POST		VEGETATION		NEXT
	FOLLOW ROAD		REFUELING POINT		ELECTRIC POLE		VEGETATION		AT
SAFETY		ON TRACK			ELECTRIC LINE		TALL GRASS		INTO
	DANGER 1		NARROW		HIGH VOLTAGE TOWER		SMALL WADI		BIG
	DANGER 2		BUMP		ANTENNA MAST		LARGE WADI		SMALL
	DANGER 3		DIP HOLE		WELL		SANDY WADI		ALWAYS
	DANGER FOR ALL SYMBOLS		COMPRESSION		WATER TANK		RIVER		STONY/ROCKY TRACK
	START ZONE SPEED LIMIT		DITCH		BARREL		WATER AREA SEA, LAKE		STONE/ROCK ON TRACK
	FINISH ZONE SPEED LIMIT		ABOVE BRIDGE		KILOMETER MARKER		PLAIN		QUIT LEAVE
	SPEED LIMIT		UNDER BRIDGE		TYRE		RESTRICTED AREA		QUIT / LEAVE MAIN TRACK
	FINISH OF SPEED LIMIT		DOWN HILL		SIGN POST INDIVIDUAL		DISTANCE IN METER		MANY
	STOP		TOWARDS		HOUSE		DISTANCE FROM TRACK		IMPERATIVE
	SLOW DOWN		UP HILL		BUILDINGS INDIVIDUAL	DUNES / SAND			COLLAPSED
WAYPOINTS			STEP DOWN		CHURCH MOSQUE		SMALL DUNE		BAD
	WAYPOINT MASKED		STEP UP		RUINS INDIVIDUAL		SMALL DUNES		ROUGH
	WAYPOINT ECLIPSE		LEFT OVER CREST		FORT		BROKEN DUNE		GET AROUND
	WAYPOINT VISIBLE		RIGHT OVER CREST		CEMETERY		SAND SPIT		NARROW
	WAYPOINT NAVIGATION		GATE BARRIER		VILLAGE		BIG BOWL IN DUNES		GRAVEL
	WAYPOINT SAFETY		GATE BARRIER		BIVOUAC		SAND PLAIN		AND
DIRECTION			CATTLE GATE BARRIER		TUNNEL		DUNES		BETWEEN
	BEARING (CAP)		WATER CROSSING		PIPELINE		DUNE		REJOIN
	BEARING AVERAGE		CONCRETE		WALL		DUNES		FOLLOW ALONG
	BEARING CALCULATED		CONCRETE IN WATER		STONE WALL		SAND		VALLEY

APPENDIX 4 – SPORTITY APPS

To access to the officials documents during the race, please download Sportity Apps.
You will receive the code one week before the event.

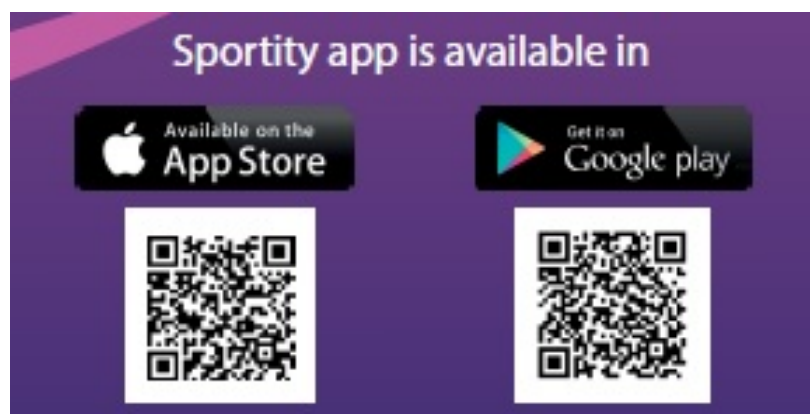
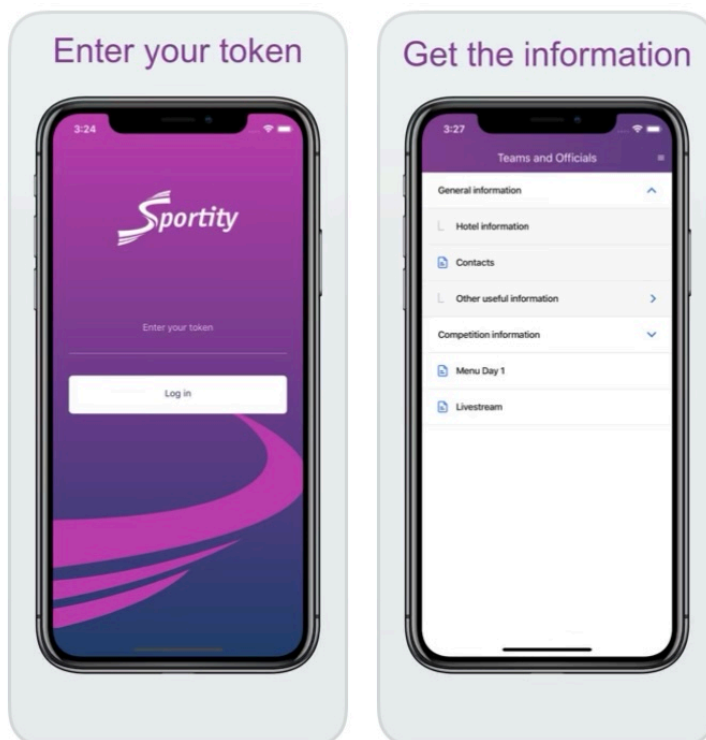


Sportity

Sports

★★★★★ 1

OPEN



NOTES